

Dress Up Card Box

Gotta love the Dress-up Framelits! Make 6 dressy cards and a flower-topped box to hold them.

Supplies:

- 1 sheet of double-sided Designer Series Paper
- 3 sheets of whisper white cardstock
- 5-6 sheets of coordinating cardstock
- Silver Glimmer paper
- Window Sheet (or clear acetate of some sort)
- Stampin' Trimmer
- Simply Scored Scoring Tool
- Dress Up and Apothecary Accents Framelits
- Fun Flowers Bigz die
- Textured Impressions Embossing Folders
- Designer Builder Brad or Button
- Sticky Strip, Glue Dots & Dimensionals
- Stamps & Punches as desired
- Ribbon & Embellishments as desired



Directions:

1. Cut the 12"x12" sheet of DSP as shown in diagram A below.
2. Take the 6-1/8" x 7-1/2" piece of DSP and glue to a piece of cardstock the same size (this is to give the lid some weight/body). Score as shown in diagram B below. Crease at all score lines. Cut at bold lines as indicated.
3. Cut a 7-1/2" x 8-7/8" piece coordinating cardstock for the bottom portion of the box. Score as shown in diagram D below. Crease at all score lines. Cut at bold lines as indicated. Assemble the sides using sticky strip.

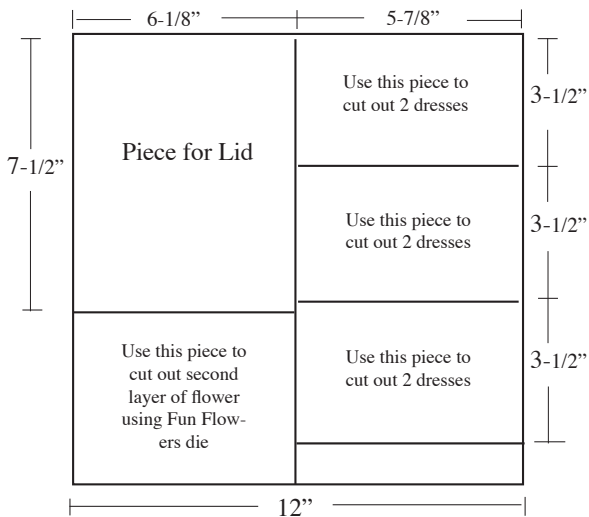


Diagram A

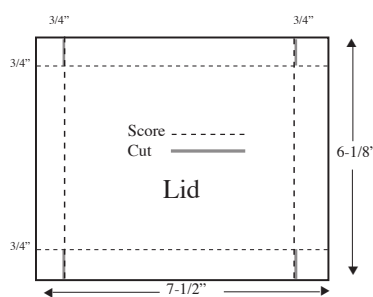


Diagram B

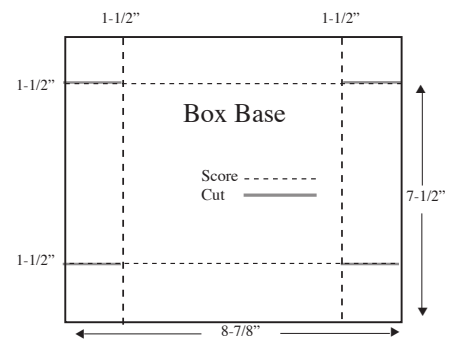


Diagram C



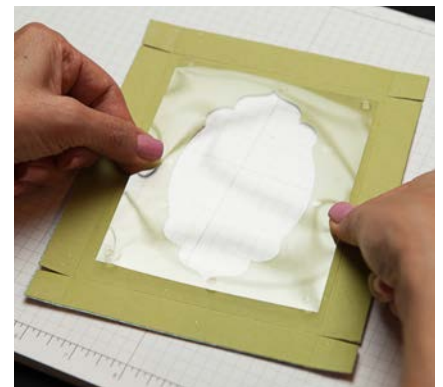
Chiaki Haverstick

Independent Stampin' Up! Demonstrator/Senior Manager
 (714) 550-9342 e-mail: chiaki@stampingpro.com

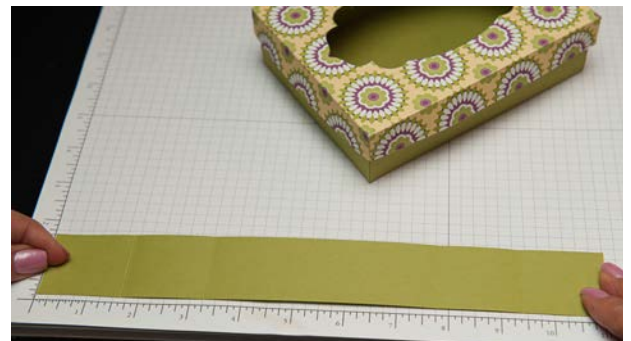
Order Online: www.chiaki.stampinup.net

Visit my Blog: www.stampingpro.com

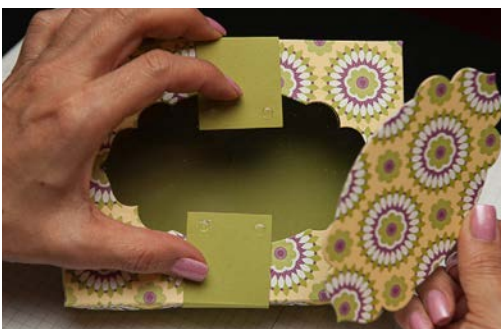
4. Place the lid piece on top of a standard cutting plate that is placed on Tab 2 of the multipurpose platform for the Big Shot. Center the Apothecary Art framelit on top of the lid (using a post-it note if necessary to limit slipping) and then another cutting plate. Run it through the big shot.



5. Place a 4-1/4" x 5-1/2" piece of acetate/window sheet on the inside to cover the opening using Glue Dots. Assemble the sides of the lid using sticky strip as shown below. The lid is now complete.



6. Cut a piece of coordinating cardstock that is 1-1/2" x 11" and score at 1-5/8", 3-1/4", 7-3/4" and 9-3/8" as shown in the image above. This will be part of the bellyband that wraps around the box.
7. Wrap the bellyband around the box and use glue dots (or other adhesive of choice) to adhere the piece that was cut out of the box lid to the belly band as shown below.
8. Cut out flower shapes (2 of each size) using coordinating cardstock and some DSP.



9. Curl the ends of the petals on each flower layer and then assemble flower as shown below. Use a brad or button for the center of the flower. Adhere completed flower to the bellyband using glue dots or adhesive of choice.





10. Cut the dresses out of the three 3-1/2" x 5-7/8" pieces of DSP (you can cut all three layers at one time). See example above. Note that you can cut some of the dresses out of the reverse side of the DSP if desired.
11. Cut three pieces of 8-1/2" x 11" white cardstock in half to make the base for six cards (fold each piece in 1/2 to make an A-2 card).
12. Cut 6 pieces of 4" x 5-1/4" coordinating colored cardstock. Texturize these pieces using an embossing folder of your choice. Adhere these pieces to the white cardstock bases.
13. Cut 6 pieces of Silver Glimmer paper using the Apothecary Art framelit (the same shape as you used on the lid). Adhere them to the card bases using glue dots and Tombow glue.
14. Cut out 6 dress forms (I use Crumb Cake cardstock). Glue the DSP dresses on them and embellish as desired. Adhere the dress forms onto the glimmer paper "mirrors" using Dimensionals. Stamp greetings and add to cards as desired.
15. Place your cards (and envelopes) into the cardbox and slide the bellyband to close. Your project is now complete!



Chiaki Haverstick
Independent Stampin' Up!
Demonstrator/Senior Manager

(714) 550-9342

e-mail: chiaki@stampingpro.com

Order Online:
www.chiaki.stampinup.net

Visit my Blog:
www.stampingpro.com

