

Top Note Card Box

Use two sheets of Designer Series Paper & the Top Note die to make this box and 6 matching cards

Supplies:

2 sheets of double-sided Designer Series Paper
 8-10 sheets of Additional coordinating cardstock
 Window Sheet (or clear acetate of some sort)
 12" Paper Cutter w/ both cutting and scoring blades
 Top Note Die for the Big Shot
 Embossing Folder (your choice)
 Sticky Strip, Glue Dots & Dimensionals
 Stamps & Punches as desired
 Ribbon & Embellishments as desired



Directions:

1. Cut both sheets of DSP as shown in diagrams A & B below.
2. Take the 6-1/8" x 7-1/2" piece of DSP and glue to a piece of cardstock the same size (this is to give the lid some weight/body). Score as shown in diagram C below. Crease at all score lines. Cut at bold lines as indicated. Place the scored piece onto a standard cutting pad for the Big Shot, center the Top Note die over this piece then cover with the 2nd standard cutting pad. Put through the Big Shot and voila! you have cut the opening for the top of your box. Place a 4-1/4" x 5-1/2" piece of acetate/window sheet on the inside to cover the opening using Glue Dots. Assemble the sides using sticky strip. The lid is now complete.
3. Cut a 7-1/2" x 8-7/8" piece coordinating cardstock for the bottom portion of the box. Score as shown in diagram D below. Crease at all score lines. Cut at bold lines as indicated. Assemble the sides using sticky strip.
4. Cut three pieces of 8-1/2" x 11" white (or colored) cardstock in half to make the base for six cards (fold each piece in 1/2 to make an A-2 card).
5. Cut 6 pieces of 4" x 5-1/4" colored cardstock and use an Embossing Folder to texturize each one. Glue each piece to the front of the cards you folded in step 4.
6. Cut 6 pieces of 4-1/8" x 5-1/2" white cardstock. Punch out 24 squares of DSP from the strips you cut in diagram A and 48 squares from the strips you cut in diagram B using the 1-3/8" Square punch. Glue the squares onto the pieces of cardstock forming a quilt pattern as desired (I used 4 squares each of 3 different patterns). Run these "quilted" pieces through the Big Shot using the Top Note die (I place the pieces upside down on the die). Embellish with the cut out piece with ribbon and stamps as desired then place onto your cards from step 5 using Dimensionals.
7. Place the cards in the box (along with envelopes) and you're done!

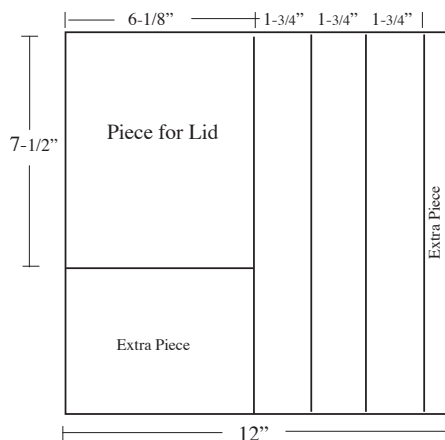


Diagram A

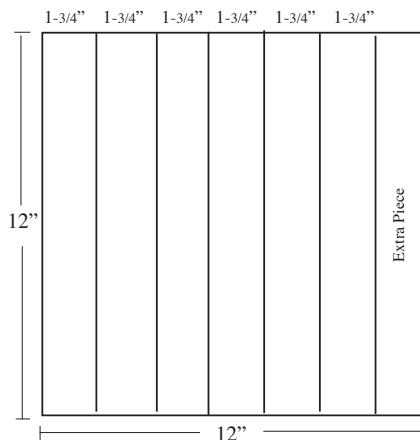


Diagram B

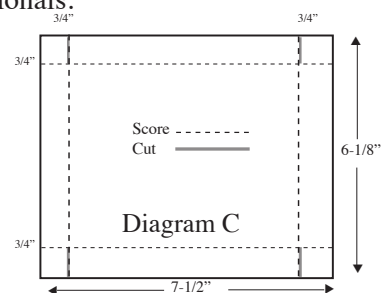


Diagram C

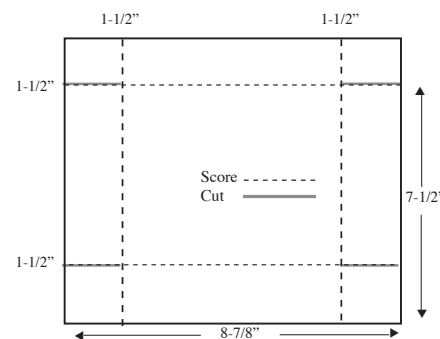


Diagram D

Chiaki Haverstick, Independent Stampin' Up! Demonstrator/SeniorManager
 (714) 550-9342 e-mail: chiaki@stampingpro.com

Website: www.chiaki.stampinup.net Blog: www.stampingpro.com

