

Square Box w/mini cards

Supplies:

- 1 sheet Designer Series Paper (12" x 12")
- 1 7-1/4" square piece of coordinating cardstock for bottom of box
- 1 5-3/8" square piece of coordinating cardstock for lid
- 2-3 sheets of 12"x12" cardstock for cards and layering
- 12" Paper Cutter w/ both cutting and scoring blades
- Sticky Strip
- Specialty edging scissors or corner punch
- Stamps and Punches (circles and scallop circle)
- Mini Brads and other desired embellishments



Artwork © Stampin' Up!® 1990-2007

Directions:

Step 1: Cut the 12" x 12" piece of Designer Series Paper as shown in diagram below and set aside.

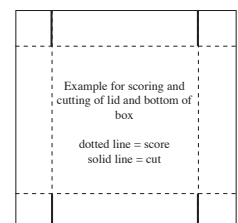
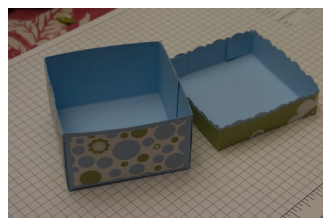
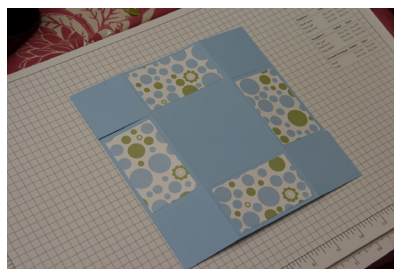
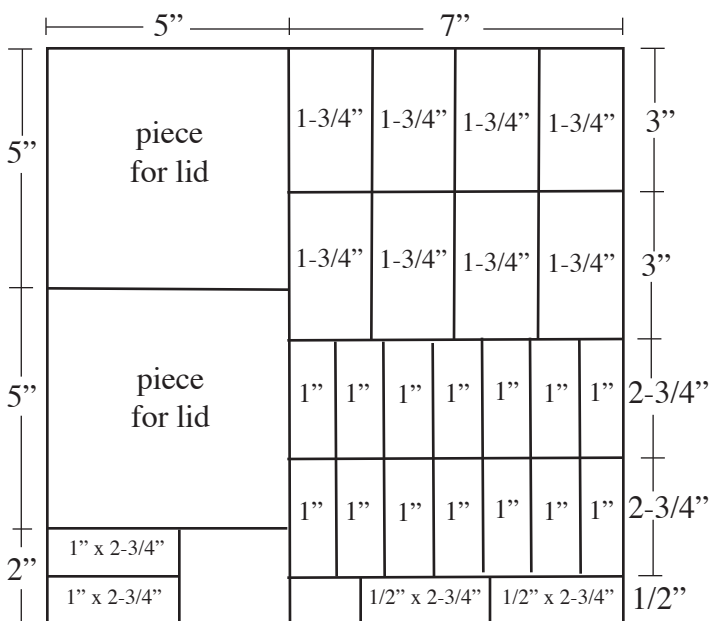
Base: Score the 7-1/4" square piece of cardstock at 2" on all four sides. Make a cut from the outside edge to the inner score mark on the 2 opposite sides. Glue the 3" x 1-3/4" pieces of Designer Series paper to the middle of each center flap section flap. Fold the flaps up and use sticky strip to assemble the box.

Lid: Glue a 5" square piece of Designer Series paper to the 5'3/8" piece of cardstock making sure that the piece is centered. Score the combined piece at 1" on all 4 sides. Make a cut from the outside edge to the inner score mark on the 2 opposite sides and use bone folder to sharply crease at folds.

If you want a scalloped edge along the lid, cut the edges now. Fold the flaps in and adhere with Sticky Strip. Embellish lid piece with the 2-3/4" x 1/2" strip, stamps and punches as desired.

Cards: Cut eight 3" x 6" pieces from the coordinating cardstock and fold each piece in 1/2 to make 3" square cards. Embellish each card with the 1" x 2-3/4" strips layering as desired and embellishing with stamps and punches. The box should hold 8 cards and envelopes.

You will have enough pieces of Designer series paper to make another box and set of 8 cards!!



Chiaki Haverstick, Stampin' Up! demonstrator
(714) 550-9342 e-mail: chiaki@stampingpro.com
www.chiaki.stampinup.net www.stampingpro.com